

OCDEM BULLETIN



FOR UNIVERSITY STAFF

WEEK COMMENCING 29 JULY 2019

ISSUE NO 198

SEMINARS

WEDNESDAY SEMINAR

There is no Wednesday Seminar this week.

FRIDAY SEMINAR

There is no Friday seminar this week.

MEDICAL GRAND ROUNDS

There is no medical grand rounds this week

WELCOME



Welcome Matthew Peach who is a summer student with the Hodson Group until 20th September



The OCDEM "A Team" were sad to see Den Carter retire on Friday 26th of July. A big thank you to Den for all he has done since joining the department 7 years ago.

A reminder that any maintenance issues in the building including cleaning should now be emailed to ocdemfacilities@ocdem.ox.ac.uk.



POSTDOCTORAL RESEARCH ASSISTANT

Grade 7: £23,236 - £39,609 p.a

An exciting opportunity has arisen for a Postdoctoral Research Assistant position in the Professor Patrik Rorsman group within the Oxford Centre for Diabetes, Endocrinology and Metabolism (OCDEM) on a highly prestigious JDRF-funded programme of research. The successful candidate will work closely with Professor Rorsman (OCDEM), Dr Linford Briant (OCDEM) and Professor Patrick MacDonald (University of Alberta, Canada).

The successful candidate will join a well-resourced team with a track record of major discoveries and supporting early career research fellows. The postholder will join a team applying a novel approach which combines single-cell sequencing with a functional readout of the individual cell's behaviour: patch-clamp electrophysiology ("Patch-seq"; see Cadwell et al. (2016) Nat Biotechnol 34(2) and Camunas-Soler et al. (2019), bioRxiv). The postholder will apply this approach to human and mouse islet cells. The overarching goal of this collaboration is to understand how the single cell transcriptome relates to the electrophysiological properties of islet cells. Why is this important? The electrophysiological properties of islet cells change in diabetes, and these properties are ultimately what determines the secretory output of the cell. This technique has already generated a substantial patch-seq dataset (> 1500 cells both sequenced and patch-clamped) in islet cells from human donors (both non-diabetic and type 2 diabetic donors). This dataset has revealed key transcripts that distinguish different functional classes of cells.

The project will involve: analysing single-cell and bulk-RNA-seq datasets; learning patch-clamp electrophysiology (training of this technique will be provided); developing their own patch-seq dataset in mouse models of diabetes; developing their own patch-seq dataset in human islets isolated in OCDEM at the DRWF Human Islet Isolation Facility; making trips to the grant holder (Professor MacDonald), when the time is mutually suitable, to discuss and develop the project.

The postholder must have submitted their thesis at the time of commencing the post. A relevant PhD is essential. Previous publications and experience in presenting at national and/or international conferences is desirable. The position would suit a molecular/cellular biologist with experience of next generation sequencing (ideally at the single cell level), who is comfortable performing some bioinformatics analyses and has a strong desire to learn something new (patch-clamp electrophysiology).

The position is full-time and fixed-term for 12 months (in the first instance, with the possibility for a 12 month extension). The position will be based at OCDEM, Churchill Hospital, Oxford.

For informal enquiries, please contact either Linford Briant (linford.briant@ocdem.ox.ac.uk) or Isabel McCarthy (isabel.mccarthy@ocdem.ox.ac.uk). Please quote reference 141985 on all correspondence. As part of your formal online application, you will be required to upload a CV and supporting statement.

Only applications received before 12.00 midday on 23 August 2019 can be considered. Interviews are scheduled for week commencing 9 September 2019

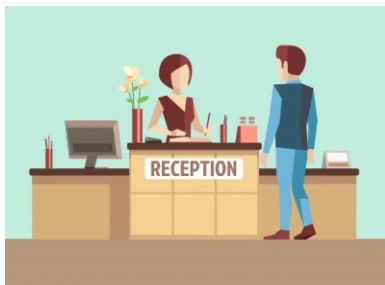


Can you please ensure that all delivery notes for items which have been received including items received on Wednesday (31st July) are returned to Karen Parish by 2 p.m. on Wednesday.

Remember purchasing is **shut down until Monday 5th August.**

The deadline for processing expense claims this financial year has passed however please ensure that you continue to pass your expense claim forms to Karen Parish for processing as any expenses incurred prior to 31st of July must be accrued into this years financial accounts.

OCDEM MAIN RECEPTION COVER 29TH JULY – 2ND AUGUST



We have been advised that due to NHS staff annual leave the following cover will be provided for the OCDEM Main Reception:

Day	Main reception
Monday	Sam – 8:30 - 12:30
	Katherine - 12:30-17:00
Tuesday	Sam – 8:30-16:00
	Katherine - 16:00-17:00
Wednesday	Sam – 8:30-14:30
Thursday	Tania – 8:30-9:00
	Katherine 9:00-17:00
Friday	Katherine – 8:30-9:00
	Sam – 9:00-14:20



The University renews its insurance policies annually on 1 August. Information relating to the new insurance year starting 1 August 2019 can now be found on the [Insurance website](#). Key information is set out below, along with any actions that departments will need to undertake.

EMPLOYERS' LIABILITY INSURANCE POLICY

- **2019-20 certificate:** the new Employers' Liability Certificate is available to download from the [Liability home page](#).

TRAVEL INSURANCE POLICY

2019-20 confirmation and summary of cover: a new confirmation of travel insurance showing dates from 1 August 2019 to 31 July 2020 is available to download from the [Travel pages](#).

- **Emergency contact information and card:** these can also be downloaded from the [Travel pages](#). Please note that the Emergency Contact details have **not** changed.

Due to the high number of claims, cover for personal belongings is currently being reviewed. Further communication will be made with departments following this review to advise of any changes in cover.

HEALTH AND WELLBEING



YOGA IN THE WORK PLACE:

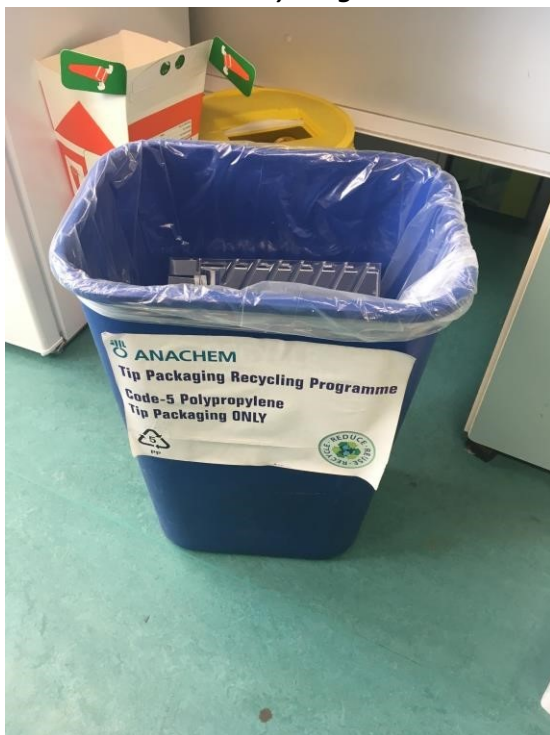
13.00-14.00 Robert Turner Lecture Theatre

July 30th

Tip box recycling in OCDEM

- Tip boxes are **not recycled** with hospital recycling.
- Therefore we have joined the **recycling scheme for tip boxes with Anachem and StarLabs**
- Please put any used tip boxes (lids, inserts, boxes) and packaging into the bins in the **first floor lab (see pictures below)**.
- Once full, a collection is arranged with Anachem/StarLab.
- Any questions, please ask either Linford.briant@ocdem.ox.ac.uk, Carla.Burrows@ocdem.ox.ac.uk, Amy.Barrett@drl.ox.ac.uk, Amanda.Bennett@ocdem.ox.ac.uk or Thomas.Clague@ocdem.ox.ac.uk.
- Feel free to collect a pile of tip boxes locally, and Linford will come round and collect them if this makes it easier.
- We are also keen to explore other ways we can reduce lab waste/increase our recycling. If you have any ideas, please let us know.
- Also, we would encourage you to **change supplier** to either StarLab or Anachem (if suitable).
- We would appreciate your effort in making this scheme successful. Thank you 😊!

Anachem recycling bin



StarLab Recycling wheelie bin





The OCDEM Christmas lunch 2019

Where: **Oxford Spires Hotel** (<https://www.phcompany.com/principal/oxford-spires/>)

When: **Friday 6th December**

Cost: £22 per person for three courses with coffee & mints. If you would like to attend, please let Ruth Coleman (ruth.coleman@ocdem) know with a deposit of £10 required to be paid by the 9th of August.

Christmas Party Menu 2019

To Start

- Tomato & basil soup, garlic croutons (v)
- Goats cheese panna cotta, golden & candy beetroot, honey sunflower croute (v)
- Ham hock terrine, piccalilli, wholegrain mustard dressing, ciabatta croute

Main Course

All served with seasonal vegetables

- Roast turkey, roast potatoes, sage & onion stuffing, pigs in blankets, gravy
- Slow cooked shredded beef brisket, fondant potato, gravy
- Poached cod fillet, lemon crushed new potato, Maltese sauce
- Spinach, mushroom, brie & walnut puff pie, mashed potato, gravy (v)

Desserts

- Traditional Christmas pudding, warm brandy sauce (v)
- Profiteroles, Chantilly cream, white & dark chocolate sauce (v)
- Lemon tart, raspberry coulis, crème fraiche (v)

Coffee and mints

We are happy to cater for all dietary requirements, please speak to our special events team in advance.

Detailed specific dish information on allergens is available on request. Please advise us before ordering if you have any allergies. As allergens are present in our kitchen therefore we cannot guarantee that trace elements will not be found. Some dishes may be able to be modified to accommodate specific dietary requirements.

(v) Denotes dishes that are suitable for vegetarian diets.