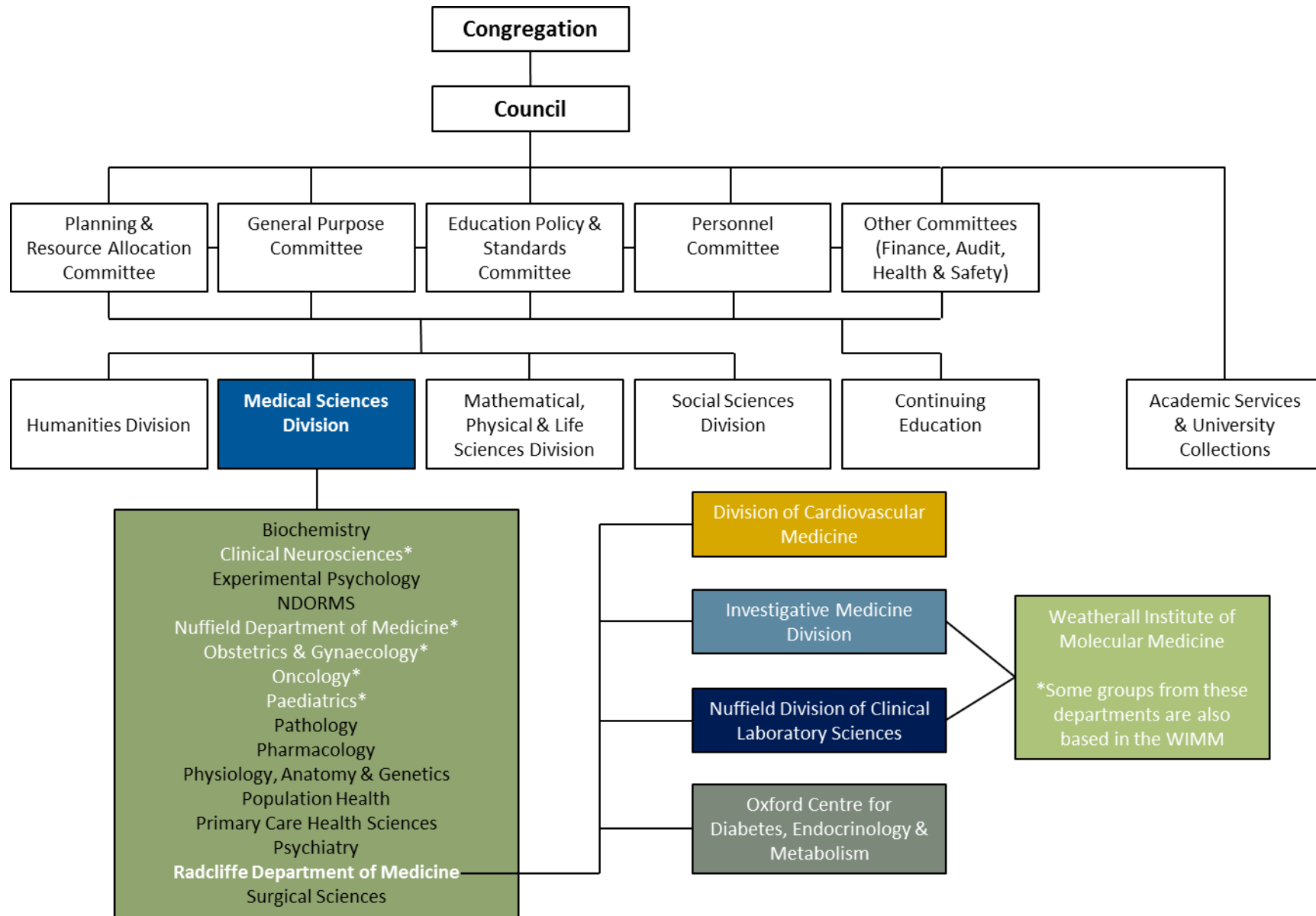


# Organisational Chart

Factsheet 2



## Where Does RDM fit in?

### **The University**

Oxford is the oldest university in the English-speaking world, and a leader in learning, teaching and research. It is a collegiate University, consisting of the central University and colleges. Oxford is consistently one of the top-ranked institutions in the world for the high quality of its facilities, research and teaching. Oxford is also ranked in the top ten globally in life sciences, physical sciences, social sciences and the arts and humanities. Students from more than 140 countries and territories make up a student population of over 22,000. Oxford is a collegiate university, consisting of the central University departments, 38 colleges and Oxford University Press (OUP). The University is the largest employer in Oxford with over 12,500 staff members working for central University departments and over 6,000 staff members working at OUP. [www.ox.ac.uk/](http://www.ox.ac.uk/)



### **Medical Sciences Division (MSD)**

We are an internationally recognised centre of excellence for biomedical and clinical research and teaching, and the largest academic division in the University of Oxford, comprising 16 departments with over 4,800 academics, researchers and administrative staff, 1,400 graduate students and 1,600 undergraduates. World-leading programmes, housed in state-of-the-art facilities, cover the full range of scientific endeavour from the molecule to the population. The Medical Sciences Division has been ranked number one for the last four years in the Times Higher Education World University Rankings for clinical, pre-clinical and health sciences. With our NHS partners, we also foster the highest possible standards in patient care. [www.medsci.ox.ac.uk/](http://www.medsci.ox.ac.uk/)



### **The Radcliffe Department of Medicine (RDM)**

The Radcliffe Department of Medicine (RDM), is a large multi-disciplinary department with research interests that span the translational spectrum, from basic biological research through to clinical application. The department has internationally renowned programmes in a broad range of sciences related to medicine, ranging from cardiovascular, diabetes, endocrinology, and stroke research, to molecular medicine, immunology, haematology and pathology, including programmes in stem cell & regenerative medicine. RDM is led by Prof Hugh Watkins and currently has around 700 employees, 125 graduate students and an annual turnover of around £59M. [www.rdm.ox.ac.uk](http://www.rdm.ox.ac.uk)



### **Your RDM Division**

You will be based within one of the Divisions of RDM: Division of Cardiovascular Medicine (CVM), Investigative Medicine Division (IMD), Nuffield Division of Clinical Laboratory Sciences (NDCLS) or Oxford Centre for Diabetes, Endocrinology and Metabolism (OCDEM), where you will be provided with additional local information relevant to your role. Many staff associated with NDCLS and IMD are based in the MRC Weatherall Institute of Molecular Medicine (WIMM) [www.rdm.ox.ac.uk/about-rdm](http://www.rdm.ox.ac.uk/about-rdm)