



FOR UNIVERSITY STAFF

WEEK COMMENCING 7th NOVEMBER 2016

ISSUE NO 62

SEMINARS

WEDNESDAY SEMINAR

There is no Wednesday seminar this week. The next Wednesday seminar will be on 23rd November

FRIDAY SEMINAR

This week's Friday seminar organised by the OCDEM Senior Academic Faculty will be a talk by Dr Hank Kronenberg on **"Cell lineage studies to define osteoblast precursors and their regulation in vivo"**

The talk will begin promptly at 1pm in the Robert Turner Lecture Theatre and sandwiches for those attending will be available from 12:45

The OCDEM Friday Seminar Series is sponsored by an unrestricted educational grant from the Sanofi

MEDICAL GRAND ROUNDS

Thursday 10th November from 13:00 to 14:00

John Radcliffe Hospital, Lecture Theatre 1



OCDEM: "Inpatient diabetes: the effect of impatience" - Dr Garry Tan, Dr Rustam Rea, Dr Alistair Lumb and the Inpatient Diabetes team

Jenner Institute: Vaccines for therapy of high risk human papillomavirus disease" - Dr Lucy Dorrell
Chair: Prof Hugh Watkin

TRAINING



We all have data and we all manage that data to a greater or lesser degree. Many of us would benefit from some guidance on how to manage the data effectively, and analyse it usefully. Lynda.com can give you some of the core skills, but our teachers in the IT Learning Centre can give you the benefit of years of experience about how best to use the right tools:

USING DATABASES (SUCH AS MS ACCESS)

DATA MANAGEMENT: DATABASES - CONCEPTS FOR PROJECT MANAGERS

21//11/2016 09:15-11.15

Info:

<https://oxford.imparando.com/accessplan/LMSPortal/UI/Page/Courses/book.aspx?courseid=PB305>

Book here:

<https://oxford.imparando.com/accessplan/clientinput/course/coursebooker.aspx?coursedateid=16525>

DATA MANAGEMENT: DATABASES - INHERITING A DATABASE

16/11/2016 09:15-11:15

Info: <https://oxford.imparando.com/accessplan/LMSPortal/UI/Page/Courses/book.aspx?courseid=D>

Book here:

<https://oxford.imparando.com/accessplan/clientinput/course/coursebooker.aspx?coursedateid=16412>

DATA MANAGEMENT: DATABASES - USER-FRIENDLY DATABASE DESIGN

Info:

<https://oxford.imparando.com/accessplan/LMSPortal/UI/Page/Courses/book.aspx?courseid=DM009>

07/11/2016 09:15-12:15

Book here:

<https://oxford.imparando.com/accessplan/clientinput/course/coursebooker.aspx?coursedateid=16540>

or

15/11/2016 09:15-12:15

Book here:

<https://oxford.imparando.com/accessplan/clientinput/course/coursebooker.aspx?coursedateid=16467>

DATA MANAGEMENT: DATABASES - QUERIES AND DATA ANALYSIS

Info:

<https://oxford.imparando.com/accessplan/LMSPortal/UI/Page/Courses/book.aspx?courseid=DM009>

14/11/2016 09:15-12:15

Book here:

<https://oxford.imparando.com/accessplan/clientinput/course/coursebooker.aspx?coursedateid=16536>

DATA MANAGEMENT: EFFECTIVE DATA MANAGEMENT IN SPREADSHEETS

07/11/2016 13:00- 16:00

Info: <https://oxford.imparando.com/accessplan/LMSPortal/UI/Page/Courses/book.aspx?courseid=DM010>

Book here:

<https://oxford.imparando.com/accessplan/clientinput/course/coursebooker.aspx?coursedateid=16539>

DATA ANALYSIS: PIVOT TABLES FOR RESEARCH/ACADEMIC DATA

10/11/2016 09:15- 11:15

<https://oxford.imparando.com/accessplan/LMSPortal/UI/Page/Courses/book.aspx?courseid=DA010>

Book here:

<https://oxford.imparando.com/accessplan/clientinput/course/coursebooker.aspx?coursedateid=16471>

MAKING A PLAN FOR RESEARCH DATA

DATA MANAGEMENT: WRITING A RESEARCH DATA MANAGEMENT PLAN

09/11/2016 14-15:30

Info:

<https://oxford.imparando.com/accessplan/LMSPortal/UI/Page/Courses/book.aspx?courseid=DM015>

Book here:

<https://oxford.imparando.com/accessplan/clientinput/course/coursebooker.aspx?coursedateid=16472>

DATA ANALYSIS: MATLAB FOR RESEARCHERS

09/11/2016 17:15- 20:15

Info:

<https://oxford.imparando.com/accessplan/LMSPortal/UI/Page/Courses/book.aspx?courseid=DA008>

Book here:

<https://oxford.imparando.com/accessplan/clientinput/course/coursebooker.aspx?coursedateid=16928>

DATA ANALYSIS: TYPICAL STATISTICS FOR RESEARCHERS USING SPREADSHEETS

14/11/2016 13:00-14:00

Info:

<https://oxford.imparando.com/accessplan/LMSPortal/UI/Page/Courses/book.aspx?courseid=DA013>

Book here:

<https://oxford.imparando.com/accessplan/clientinput/course/coursebooker.aspx?coursedateid=16535>

21/11/2016 09:15-12:15

Book here:

<https://oxford.imparando.com/accessplan/clientinput/course/coursebooker.aspx?coursedateid=16394>

DATA VISUALISATION: CREATING INTERACTIVE VISUALISATIONS USING R AND SHINY (2 SESSIONS)

14/11/2016 14:00 -17:00 & 21/11/2016 14:00 -17:00 17:00

Info:

<https://oxford.imparando.com/accessplan/LMSPortal/UI/Page/Courses/book.aspx?courseid=DV002>

Book here:

<https://oxford.imparando.com/accessplan/clientinput/course/coursebooker.aspx?coursedateid=16414>

DATA ANALYSIS: A BEGINNER'S TOUR OF STATA

14/11/2016 12:30- 13:30

Info:

<https://oxford.imparando.com/accessplan/LMSPortal/UI/Page/Courses/book.aspx?courseid=DA001>

Book here:

<https://oxford.imparando.com/accessplan/clientinput/course/coursebooker.aspx?coursedateid=16469>

DATA ANALYSIS: DATA ACCESS AND MANAGEMENT USING STATA

14/11/2016 14:00- 17:00

Info:

<https://oxford.imparando.com/accessplan/LMSPortal/UI/Page/Courses/book.aspx?courseid=DA002>

Book here:

<https://oxford.imparando.com/accessplan/clientinput/course/coursebooker.aspx?coursedateid=16468>

DATA MANAGEMENT: BACKING UP YOUR DATA TO THE HFS WITH TSM

21/11/2016 9:15-12:15

Info:

<https://oxford.imparando.com/accessplan/LMSPortal/UI/Page/Courses/book.aspx?courseid=DM001>

Book here:

<https://oxford.imparando.com/accessplan/clientinput/course/coursebooker.aspx?coursedateid=16407>

PURCHASING INFORMATION



New Agreements – Live on Oracle Financials from 1 November

VWR International has been awarded a two-year sole-source contract for Thermo-branded consumables. All prices are lower than those previously paid, with a further average saving of 19%.

Details of all sole source deals can be found [here](#).

New Punchout

Dharmacon products, including gene-specific and custom products for Gene Editing, RNAi and Gene Expression, are now available via a new GE Healthcare punchout in Oracle Financials. For further details contact emma-jayne.corkish@admin.ox.ac.uk

FINANCE INFORMATION



COMPLIANCE WITH THE BRIBERY ACT 2010

The UK Bribery Act 2010 makes the giving, solicitation or receiving of bribes a criminal offence, and makes it a corporate offence for an organisation not to prevent bribery by an associated person (such as a member of staff or a service provider) regardless of geographical location. Following the introduction of this Act, the University adopted a Bribery and Fraud Policy. This has recently been split into two separate policies; Anti-Bribery and Anti-Fraud. These, along with the Public Interest Disclosure (whistle-blowing) Code of Practice, can be accessed via the [Council Secretariat website](#).

Every member of staff is responsible for ensuring that they comply at all times with these policies, so please have a look at the information online, which includes a [concise booklet](#) to summarise the UK legislation relating to bribery and the corresponding University policies, as well as a number of [case studies](#).

If you have any questions or examples of relevant case studies from your area that could be added to the website, please email: compliance@admin.ox.ac.uk.

PERSONNEL INFORMATION



Dear colleagues

You may be aware that every year we are required to include the University's total number of consultancies via the HEBCI return. The reported figure drives funding for the Higher Education Innovation Fund which was worth £3.35M to Oxford in 2015-16 so it is very important that all consultancies are reported. No information about individuals is reported to HEFCE, just totaled figures.

Departments are ***asked to record on CORE details of consultancies with business, the public sector (including the NHS) and NGOs/charities held by their staff which have not been arranged via Oxford University Innovation.*** There is a separate mechanism for recording consultancies arranged via Oxford University Innovation so these do not need to be entered into Core (although please do enter consultancies if it is not clear whether or not they were arranged via Oxford University Innovation)

I would be grateful if you could let me know if you hold any outside appointments.

If you are not sure whether you hold an outside appointment please visit the link <http://www.admin.ox.ac.uk/personnel/staffinfo/academic/approvaltoholdoutsideappointments/> for further information.

I would be grateful if you could let HR know by 8th November 2016. I have attached the form that needs completing.

May I also take this opportunity to thank all those who do keep me up to date with their outside appointments.

Thank you

Aleks

WORK ON OUH TRUST ENERGY LINK - PROGRAMME CONFIRMED



Dear colleagues,

Apologies if you have already received this, but the OUH Trust have now confirmed the Energy Link Heat Pipe construction programme following approval from City and County. Details forwarded but key points for the University in terms of access to Old Road Campus and the Churchill Hospital are:

- Work will take place on **Old Road** between Lime Walk and Churchill Drive **MONDAY 6 MARCH – FRIDAY 17 MARCH**. The road will be open but reduced to one lane and controlled by traffic lights.
- **Churchill Drive will be completely closed for 6 weeks** from 13th March to 21st April 2017. This is slightly later than planned but on the plus side is lasting 2 weeks less than the last update. This may of course change if the Archaeological examination finds anything of interest

The OUH Trust have indicated that they plan to hold a further information session, probably with Q&A, in January/February just before the works commence.

Any specific queries please feel free to contact Jo Lennon at the Trust directly

Thanks

Adam Bows

Sustainable Transport Manager

ATHENA SWAN NEWS



Santas elves have been busy in their workshop and they have asked us to remind you that if you and/or your children would like to attend the OCDEM Family Christmas Event on Saturday 10th December you need to let oracle@ocdem.ox.ac.uk know by this **Friday (11th November)**. The elves have a large order book and they do not want the OCDEM children to miss out.

THANK YOU

The A Team would like to thank everyone who donated when they walked round site on Halloween collecting for Sobell House. A total of £250 was raised and fun was had by all.



POPIES WANTED



If you have any poppies which you do not need after Remembrance Day the A Team are looking for some and would very much appreciate if you could bring them in and give them to Rachel Mullins



Cycle lights check – Oxford Press Release - Thursday 03 November 2016

Thames Valley Police Roads Policing Department carried out cycle light checks in Oxford yesterday (2/11), stopping 102 cyclists not displaying working lights on their bicycles.

The checks took place as part of the ongoing 'Cycle Lights Scheme', which is now run all-year-round across the Force. Roads Policing officers were on the High Street, Oxford, between 5.30pm and 8.30pm.

The checks are usually carried out every year after the clocks have gone back, to remind cyclists to ensure they have the correct safety measures in place to help prevent themselves from becoming a victim of a road traffic collision.

Any cyclists stopped had three options: to either pay an on-the-spot £50 fixed penalty notice; complete an online cycle safety diversion course (costing £30); or challenge the matter in a magistrates' court. Last night, most of those stopped indicated a preference for completing the safety course.

At court, if the offender pleads not guilty or fails to comply with the conditions of the notice, or is reported to court by the officer rather than being given a ticket, then the court can fine the offender up to a maximum of £1,000 per offence.

Road Safety PC Mark Pilling said: "We carry out these checks in order to educate cyclists as to the importance of being fully visible to all other road users.

"Cyclists must have a red light to the rear and a white light to the front of their bike and it is advisable to wear either some fluorescent or high visibility clothing and a cycle helmet. They are reminded to remove the lights when they lock up their bikes to prevent them from being stolen.

"While a cyclist may be able to see where they are going on a well lit street, this does not mean they are fully visible to motorists approaching with their headlights on.

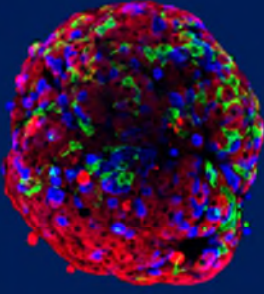
"We will be carrying out further checks during the coming months."

Dear All

With reference to the above press release – If any students /staff need Cycle lights – Come and get them from Security Services at the Old Observatory, South Parks Road , as they will only cost £4.50 for front and back lights and that also includes six batteries – it will save you getting a £50 fine!!

Belinda Hopkins

Crime Prevention and Reduction Advisor



Eyes on Diabetes: Research and Innovation

Friday 18 November, 2-6pm

Oxford Centre for Diabetes, Endocrinology & Metabolism
(OCDEM), OX3 7LJ

To celebrate World Diabetes Day, we are opening
our doors to the public!

For more information and a map, visit: <http://bit.ly/EyesOnDiabetes>

Dear all

With 2 weeks to go to the World Diabetes Day events I wanted to update everyone on the plans for the week and highlight things we need help with.

The schedule for the week is:

Monday 14th Oct sunset: Excitingly Rustam has secured permission to light up Magdalen Tower blue in for world diabetes day! We will accompany this with leafleting on diabetes awareness and promotion of the Friday event

Monday 14th Nov-Thursday 17th Nov: Launch of diabetes in-patient service with stalls and information at all the OUHFT sites.

Friday 18th Nov 2-6pm: "Eyes on Diabetes: Research and Innovation" event in OCDEM

How you can help:

1 Publicity, publicity, publicity! Please spread the word as far as possible – to groups of patients, local community groups you are involved with, to your local school, in cafes, gyms, community centres, local notice boards. Come to me or Sam Pearce if you would like a bunch of leaflets.

Social media: you can download a World Diabetes Day ap which allows you to take a selfie with a Blue diabetes circle. Tweet/FB from your team meeting/lab with a blue circle and advertise the event using the attached image, #OCDEM and the url <http://bit.ly/EyesOnDiabetes>

2. Volunteers for leafleting in city centre on Monday 14th November from around 4.30-6.00

3. Volunteers for Friday 18th Nov event: many of you are already involved in stalls for your group. We also need volunteers to man reception areas and monitor the refreshment stand, help people find the lift/toilets etc – even half an hour will help! Strong people to help set up the waiting area in the morning and kind people to help get the building back to normal at 6pm

Thanks !

Katharine

MICHAELMAS TERM 2016 UPDATE FROM THE BODLEIAN LIBRARIES

Richard Ovenden, Bodley's Librarian



INTRODUCTION

We start the academic year having made significant improvements to our estates and services over the Long Vacation, with the integration of the Slavonic & Modern Greek section into the Taylor Institution Library and major improvements to the St Cross building. This term we continue to work on a number of enhancements to our estates to better align them to the needs of readers and the University.

Innovative services rolled out in 2016, like the provision of real time information on reading list material, have made a marked difference to our readers. We continue to expand our digital resources and new acquisitions that provide unique resources for our readers.

With the start of term we welcome new readers to our libraries. Please contact a librarian or visit our website (www.bodleian.ox.ac.uk) if you need further information or have queries or comments.

RESOURCES & SERVICES

UPDATE ON OPEN ACCESS & 'ACT ON ACCEPTANCE'

October 2016 marks the first anniversary of Oxford's Act on Acceptance service, which provides researchers with a quick deposit route into the Oxford University Research Archive (ORA) and supports the University's open access policy of 'ensuring the widest possible access to research findings'.



The total number of deposits since October 2015 is approaching 10,000 items, around half of which have been deposited since April when the new HEFCE policy took effect. The new policy requires all articles accepted for publication since 1 April 2016 to be deposited in an open access repository within 3 months of acceptance in order to be eligible for the next Research Excellence Framework (REF). All researchers are encouraged to adopt the new routine and make a habit of depositing their latest papers.

The Libraries continue to support the research community in a variety of ways. Subject Librarians and the Enquiry team provide information, advice and training both locally and centrally. The ORA staff process all the deposited articles and other outputs, checking the copyright and publisher embargoes before making the full-text available via <http://ora.ox.ac.uk>. The Article Processing Charges team administer the block grants received by the University for APC (publisher's open access fees), providing a central payment service for researchers funded by Research Councils UK and the Wellcome Trust.

For more information please visit <http://openaccess.ox.ac.uk> or email: openaccess@bodleian.ox.ac.uk

WESTON LIBRARY

The Weston Library was one of six buildings to be shortlisted for the RIBA Stirling Prize 2016, the most prestigious prize in British architecture. This was the latest in a string of accolades the building has been recognised with over the past few months, including The Architects' Journal 2016 Retrofit Award, a RIBA National Award and an Oxford Preservation Trust Award. Thanks to the generosity of many benefactors, this year funding for the Weston Library was completed.

NEWLY AVAILABLE SPECIAL COLLECTIONS ACQUISITIONS

Special Collections have released the third edition of its Oxfam Programme Policy, Management and Administration catalogue, which now includes over 900 boxes of material. This is part of the ongoing Wellcome-funded Oxfam project.

A large collection of Oriental manuscripts belonging to the late Simon Digby (1932-2010) were donated to the Bodleian Libraries by the Simon Digby Memorial Trust. Digby, a descendent of Sir Kenelm Digby (d.1665), whose manuscript collection the Bodleian Libraries also holds, was a Fellow of Wolfson College, and a scholar, linguist, translator, and collector. He was Assistant Keeper of Eastern Art at the Ashmolean Museum from 1972. The Simon Digby Oriental Collection now consists of over 260 manuscripts, the majority of which are in Persian, with a handful in languages such as Arabic, Urdu, Turkish and Hindi.



International Open Access Week 24-30 October

The theme is **Open in Action**. Details of events plus other information about how to deposit and the help available are on the Open Access Oxford website: <http://openaccess.ox.ac.uk> and Twitter @OAOxford

LIBRARY SPACES

UPGRADING SERVICES – BODLEIAN HEALTH CARE LIBRARIES (BHCL)

In April 2016 the Bodleian Health Care Libraries took on and started to upgrade two new libraries: the Girdlestone Memorial Library at the Nuffield Orthopaedic Hospital (NOC) in Headington and the Horton Hospital Library in Banbury.

Work has progressed well to improve library facilities at the NOC which now includes: new Bodleian and NHS networked PCs for library users; new furniture and shelving; improved printing and scanning facilities; adjustable desks for disabled library users; and a laptop borrowing service. The updated book stock is also now available on SOLO.

Books can now be borrowed using University cards and our NHS Bodleian Reader cards and books from any other BHCL Library site can be requested for delivery to the NOC and can be returned at any site. A new NOC Library Supervisor and Library Assistant are in post and we are exploring ways to provide enhanced Outreach Librarian support across the NOC site (which includes the University Nuffield Department of Orthopaedics, Rheumatology and Musculoskeletal Sciences).

Further planned improvements over 16/17 include installing WiFi and adding the NOC to the Bodleian book delivery network. Library services at the Horton will be similarly upgraded over 16/17 with a view to bringing the facilities as far as is possible in line with those available across the other BHCL sites.



ST CROSS BUILDING REFURBISHMENT

The St Cross Building (home of the Bodleian Law Library and the English Faculty Library) has now reopened following a major refurbishment. After several months which included the temporary closure of the whole building over the 2016 Long Vacation, the Grade II* listed building has been reconfigured to improve access and provide new facilities for library users with a new central lift, a new cafeteria, new seminar rooms and new disabled access.

Work is continuing on other sections of the building and soon both libraries will have improved entrances as well as additional spaces for individual and group study. Much of the building's interior will be redecorated, giving it a much-needed face-lift.

Due to changes to the building, some of the older, and the superseded, law material is now housed in new rolling-stacks onsite on the ground floor rather than on open shelving. The English Faculty Library's Wilfred Owen collection is now housed in the Weston Library, as part of the Bodleian's Special Collections, whilst low-use material is available on request from the Book Storage Facility in Swindon.

RESOURCES & SERVICES

ORLIMS: ONLINE READING LIST MANAGEMENT INFORMATION SYSTEM

The ORLIMS service is now Business as Usual for the five Departments and Centres who took part in the pilot. Reading lists are now available: Department of Politics and International Relations; Centre for Criminology; Department of International Development; Department of Economics and African Studies Centre.

The ORLIMS service proved very popular in 2015-16, receiving 2,534 'visits'. The most popular list was International Relations for PPE/History and Politics Undergraduates (Department of Politics and International Relations), which was accessed 321 times. The total lists created and completed to date is 61.

PCAS: PRINTING, COPYING & SCANNING

The PCAS printers in the Bodleian Libraries' reading rooms were upgraded this summer. New copying, printing and scanning machines provide faster printing and proximity "touch" authentication replace separate card swipes.

The key change is that PCAS accounts now use Bodleian Libraries username and password (which are also used to login to reading room PCs and Bodleian Libraries WiFi). This delivers considerable improvements by automatically setting up the reader's account and simplifying prints jobs from reading room PCs.

Support for all aspects of the changes is available from the PCAS support team at pcas@bodleian.ox.ac.uk and guides for using the new equipment are available from www.bodleian.ox.ac.uk/using/copy/pcas



RADCLIFFE OBSERVATORY QUARTER (ROQ)

Work continues in planning the ROQ Humanities building and its library. A pre-feasibility study was undertaken during the Long Vacation and was presented to the ROQ Project Sponsor Group and Building Committee for consideration. The study provides expert recommendations on broad planning issues such as the size, layout, massing and servicing of the potential building within the ROQ site. Specific library requirements and aspirations were fed into the study along with a key discussion about the provision of graduate study space in the building.

A Libraries User Group has also been established, consisting of academics, students and subject librarians from relevant faculties, reporting to the Building Committee. This group will also look into the provision of graduate study space in the Library and in the rest of the building.



TAYLOR INSTITUTION LIBRARY – INTEGRATION OF THE SLAVONIC & MODERN GREEK LIBRARY

The integration of the Slavonic & Modern Greek section into the Taylor Institution Library was successfully completed during the Long Vacation. The former Room 3 now provides a Slavonic Reading Room with reference material, key periodicals, enquiry point and 20 reader seats while the former Room 10B caters for Modern Greek (12 readers seats). 13% of the research collections across all languages have been transferred to the BSF while an estimated 400k volumes are on open access in the library.

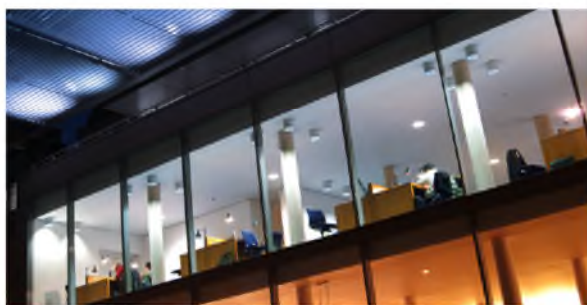
During Michaelmas Term, processing of materials currently housed in the Oriental Institute Library continues; it is hoped to complete the transfer by the end of 2016. The former Room 16 has been designated as an additional study room for (up to 18) graduate students allowing the existing study room to be used flexibly for small seminars run by graduate students, meetings or extra reader seats at time of peak demand. Further details are on the Library's website at www.bodleian.ox.ac.uk/taylor

FUTURE OF THE RADCLIFFE SCIENCE LIBRARY (RSL) PROJECT

A proposal has been put forward to refurbish the RSL with the overall aim to enhance resources and provide better spaces for informal and formal teaching, learning and research (including interdisciplinary research). Spaces proposed include seminar facilities and a Doctoral Training Centre to accommodate postgraduate students. The refurbishment also aims to encourage and support knowledge exchange and transfer through links to specialist support functions for example OSI and OUI, Research Services. Finally the project also aims to deliver facilities to support public engagement (using University collections and supporting Oxford Sparks and STEM education initiatives) and allocating the sub-basement of the RSL to the museums for storage.

This project flows from a joint initiative by the Bodleian Libraries, the Mathematical Physical and Life Sciences Division, Social Sciences Division and the Medical Sciences Division, and is set within the context of a cultural precinct which is envisaged for the heart of the Science Area.

Since Trinity Term 2016 the firm to conduct the pre-feasibility study has been named, a timeline is being developed and a final draft of the pre-feasibility report is due for review on 24 October 2016 with the agreed pre-feasibility report submitted to BESS on 18 November 2016.



SAINSBURY LIBRARY

The lower level of the Sainsbury Library was just recently refurbished with a new carpet and floor plan, and the installation of easier to access power sockets on top of the discussion tables. The self-issue system has also been relocated, from a free standing and somewhat intrusive location, into a brand new library front desk, designed and built to merge in with the new layout.

LEOPOLD MULLER LIBRARY

Following a fire in the Clarendon Institute during the Long Vacation, the building, including the Leopold Muller Memorial Library, is now open.

EVENTS AND EXHIBITIONS

WHAT'S ON AT THE BODLEIAN LIBRARIES

The Libraries run a programme of exhibitions, displays and events. These are primarily held in the Weston Library and in the Bodleian Library. Admission to exhibitions and events is free; pre-booking for events is advised at: www.bodleian.ox.ac.uk/whatson

EXHIBITIONS AND DISPLAYS

Staging History 14 Oct – 8 Jan
ST LEE GALLERY, WESTON LIBRARY

Exploration, revolution and patriotism take centre stage in the Bodleian Libraries' newest exhibition, *Staging History*, which reveals how historical events were presented on stage in Regency-era Britain (1780-1840).



Bodleian Treasures: 24 Pairs

Open until 19 Feb 2016
THE TREASURY, WESTON LIBRARY

What is 'treasure'? Explore this theme and more in this unique exhibition which presents some of the best of the Bodleian's 12 million items uniquely displayed in 24 pairs.

Richard Hakluyt: The World in a Book 22 Oct – 23 Dec

BLACKWELL HALL, WESTON LIBRARY

A display of Elizabethan travel books and rare maps celebrating the Oxford geographer Richard Hakluyt (1552-1616).

The Hunt in Mughal India 29 Oct – 8 Jan

PROSCHOLIUM DISPLAY, BODLEIAN LIBRARY

Look out for this small display featuring depictions of the varied hunting practises in Mughal India, as found in some of the most beautiful items held in the Libraries' South Asia collection.

EVENTS

Sonnets Alive! 10 Nov BLACKWELL HALL, WESTON LIBRARY

Come and join a celebration of Shakespeare's poetry and sonnet-writing today. Enjoy a presentation of hand-printed sonnets from around the world and closer to home, as well as a poetry reading with special guests.

Shakespeare Dead or Alive 27 Nov BLACKWELL HALL, WESTON LIBRARY

The closing event of the year-long Shakespeare Oxford 2016 is a new dance and spoken word piece presented by Crossover Dance Projects.

Christmas Light Festival 25 – 27 Nov WESTON LIBRARY

The Weston Library is opening its doors for the Christmas Light Festival once again. Look out for events happening across the weekend, including the chance to create your own e-christmas card with Film Oxford, late night entry to exhibitions, and Christmas gifts and seasonal treats at the Weston Library shop and café.

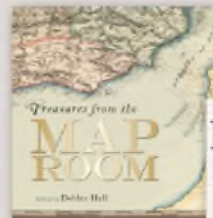
VISITING SCHOLARS' CENTRE

The Bodleian Visiting Fellowships Programme offers several Fellowships to external academic and curatorial researchers to use Special Collections material for their own projects (see www.bodleian.ox.ac.uk/csb/fellowships).

Over the course of Michaelmas Term the VSC will be welcoming 11 scholars from institutions around the world undertaking projects including research into the history of the breviary, the Long Parliament diaries of Walter Yonge 1642-1645, and research into the Marconi archives and the nationalization of the radio engineering industry in post-war Poland. Free talks by some of our visiting scholars take place throughout the year. Please check online for details of all upcoming talks and events: www.bodleian.ox.ac.uk/whatson

Publications launched by Bodleian Publishing this Autumn include:

Treasures from the Map Room Sept 2016



With contributions from members of the Bodleian's Special Collections team.



Bodleianalia
Oct 2016

A book on all things Bodleian.

For more information visit
www.bodleian.ox.ac.uk/about-us/publishing

Our next newsletter will be with you in January 2017. In the meantime, please continue to visit www.bodleian.ox.ac.uk for news and updates, or follow us on Twitter (@bodleianlibs) and Facebook (www.facebook.com/bodleianlibraries).

Please contact me directly if you have any other questions or comments on our services.

Kind regards,

Richard Ovenden
Bodleian Librarian



Bodleian Libraries
UNIVERSITY OF OXFORD

WEAR IT PINK

A Huge Thank you for your generous donations for such a worthy cause.

We made a whopping £106.50 for Breast Cancer.



Karyna Gibbons