



## FOR UNIVERSITY STAFF

WEEK COMMENCING 31<sup>st</sup> October 2016

ISSUE NO 61

### SEMINARS

#### WEDNESDAY SEMINAR

This week's Wednesday Seminar series will be hosted by Associate Professor Angie Bethel and the speaker is Professor Adam Timmis of the NIHR Biomedical Research Unit, London.



The title of his talk is "**Electronic health records for CV event analysis in type 2 diabetes**". The talk will begin promptly at 1pm in the Robert Turner Lecture Theatre, and sandwiches for those attending will be available from 12:45pm.

The OCDEM Wednesday Seminar Series is sponsored by an unrestricted educational grant from the Boehringer-Ingelheim and Eli Lilly alliance

---

#### FRIDAY SEMINAR

This week's Friday seminar organised by the OCDEM Senior Academic Faculty will be a talk by Melissa Brereton on "**Is Type 2 Diabetes a Glycogen Storage Disease?**"

The talk will begin promptly at 1pm in the Robert Turner Lecture Theatre and sandwiches for those attending will be available from 12:45

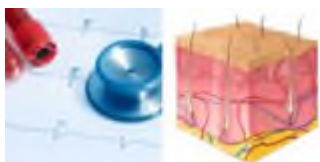
The OCDEM Friday Seminar Series is sponsored by an unrestricted educational grant from the Sanofi

---

#### MEDICAL GRAND ROUNDS

Thursday 3<sup>rd</sup> November from 13:00 to 14:00

John Radcliffe Hospital, Lecture Theatre 1



**Acute General Medicine Firm B:** "Just another terrible headache?" – Dr Andrea Pereira, Dr Maria Dudareva, Dr Charlotte Frise and Dr John Reynolds

**Dermatology:** "Rash Advice" Dr Dhruvkumar Laheru and Dr Antonia Lloyd-Lavery

Chair: Prof Chris Conlon

## **VACANCIES IN THE DEPARTMENT**



### **ADMINISTRATIVE/FINANCE ASSISTANT**

**Grade 4: £ 20,989-£ 24,298 per annum**

We are looking to appoint an Administrative/Finance Assistant to support the OCDEM administration team. Reporting to the Finance/Facilities Officer you will play a key role in the Finance Team, carrying out day-to-day administrative and finance related processes in a professional and efficient manner.

You will be responsible for general financial duties, including invoice processing, petty cash handling, expenses and payment requests, ensuring they are processed accurately and in line with University financial controls. The post holder will be required to deal with day-to-day Finance Office queries by email, phone and in person, excellent communication skills will therefore be required.

The successful candidate will have intermediate knowledge of Microsoft Office including Microsoft Excel as well as high level of attention to detail and numerical accuracy. You will be required to use your initiative and work with minimum supervision. Previous Oracle experience would be desirable.

This is a full time post and is fixed-term for three years in the first instance.

The closing date for applications is 12.00 noon on 3<sup>rd</sup> November 2016.

Interviews will be held on Monday 14<sup>th</sup> November 2016.

You will be required to upload a supporting statement and CV as part of your online application. To apply for this role and for further details, including a job description and person specification, please click on the link below:

[https://www.recruit.ox.ac.uk/pls/hrsliverecruit/erg\\_jobspec\\_version\\_4.jobspec?p\\_id=125929](https://www.recruit.ox.ac.uk/pls/hrsliverecruit/erg_jobspec_version_4.jobspec?p_id=125929)

## **TRAINING**



### **DIGITAL MEDIA: ILLUSTRATION WORKFLOWS FOR ACADEMICS AND PROFESSIONALS**

***Tues 01 Nov 2016 09:15-12:15***

Booking link:

<https://oxford.imparando.com/accessplan/clientinput/course/coursebooker.aspx?coursedateid=16547>

Illustrator is a powerful and fully featured drawing tool. It can take a while to become comfortable with using it ([Lynda.com](http://Lynda.com) is your friend here), but just as important is understanding the workflow in creating a drawing or diagram. This session, taught by an expert in Illustrator, will introduce you to that workflow.

Students £15/Staff £30

### **DIGITAL MEDIA: PODCASTING AT OXFORD**

***Weds 02 Nov 2016 09:15-11:15***

Booking link:

<https://oxford.imparando.com/accessplan/clientinput/course/coursebooker.aspx?coursedateid=16383>

### **DIGITAL MEDIA: RECORDING THE SPOKEN WORD**

***Weds 02 Nov 2016 11:15-12:15***

Booking link:

<https://oxford.imparando.com/accessplan/clientinput/course/coursebooker.aspx?coursedateid=16382>

These two sessions introduce you to the basics of podcasting and recording your own audio (for podcasts and elsewhere)

Students £10/Staff £20 for each session

### **TEACHING: COPYRIGHT IN THE DIGITAL WORLD**

***Weds 02 Nov 2016 12:30-13:30***

Booking link:

<https://oxford.imparando.com/accessplan/clientinput/course/coursebooker.aspx?coursedateid=16444>

It is all too easy to find media and be tempted to reuse it without proper consideration of the copyright issues. This session will also cover how you should protect your published material on the internet.

Students FREE/Staff FREE

## **OUTREACH AND ENGAGEMENT: MANAGING MEDIA INTERVIEWS**

***Thur 03 Nov 2016 09:16-16:15***

Booking link:

<https://oxford.imparando.com/accessplan/clientinput/course/coursebooker.aspx?courseid=16381>

Communicating your research to the media is important – and sometimes you only get one chance! Be prepared by coming along to this workshop and learn some practical techniques for making the most of your interview.

Students £30/Staff £60

## **DATA ANALYSIS: UP AND RUNNING WITH NVIVO (2 SESSION COURSE)**

***Fri 04 and Fri 11 Nov 14:00-17:00***

Booking

link: <https://oxford.imparando.com/accessplan/clientinput/course/coursebooker.aspx?courseid=16477>

One of our most popular courses, with a few places left.

Students £30/Staff £60

All of our courses can be paid for in advance, online, using a credit/debit card or a PO or internal transfer where appropriate.

## **BUILDING MAINTENANCE**



## **OCDEM MANDATORY FIXED WIRING TESTING**

SSE, working on behalf of OUH NHS Estates Department, will be carrying out the mandatory periodic fixed wiring testing across all of the 4 hospital sites and the OCDEM building will be affected by this during the period 31st October 2016 until 11th December 2016.

The proposed schedule for power shut downs can be found [here](#) and plans of the affected areas can be seen [here](#).

Power and lighting will be switched off at approximately 08:00 each day and the shut down will last approximately 8 hours each time. This may well be refined closer to the actual dates.

The lab managers, Safety Officer, Facilities Officer and Trust representatives have been working closely with SSE to try to ensure that the operation runs smoothly but disruption will be unavoidable.

If you have any queries or concerns please contact the Facilities Officer, Den Carter, in the first instance

## **ATHENA SWAN NEWS**



### **MANDATORY HARASSMENT AND BULLYING TRAINING**

Professor Hugh Watkins has decided to make training on **Harassment and Bullying** mandatory for everyone in RDM who has line management responsibility, including all RDM PI's who have not already completed training.

A course will be run on

**Thursday 17<sup>th</sup> November**, 9.30-11.00 am in the OCDEM lecture theatre, Churchill site

**Thursday 17<sup>th</sup> November** at 11.30 am – 1pm in the NDCLS Seminar Room, John Radcliffe site

The course (which takes around 90 minutes) will be introduced by Professor Watkins and will be delivered by officers from divisional and central administration. The content will include

- Understand what is meant in terms of policy (and legislation) by the terms bullying and harassment
- Reflect on what bullying and harassment looks like in RDM and consider the actor and receiver's perspective
- Identify the responsibilities of the leader/manager and all staff in addressing bullying and harassment
- Firm management vs. bullying behaviours
- Be aware of what you can do to intervene if others are bullied or harassed or if you feel you are being bullied or harassed

Please could you e-mail [felicity.green@rdm.ox.ac.uk](mailto:felicity.green@rdm.ox.ac.uk) to register for this training.

### **HAPPY HALLOWEEN**



Members of the OCDEM "A Team" will be dressing up today (Monday 31<sup>st</sup> of October) and collecting on behalf of Sobell House.

# Melina Claussnitzer, Ph.D

BIDMC Harvard Medical School and Broad Institute of MIT and Harvard

## Seminar at the MRC Harwell Institute

Friday 2nd December

11:30am

Elucidation and manipulation of non-coding variant circuitry underlying the risk of obesity and type 2 diabetes in humans

To book your place please email:  
[mguadmin@har.mrc.ac.uk](mailto:mguadmin@har.mrc.ac.uk)

Car parking available or take the Science Transit Shuttle  
[www.sciencetransitshuttle.co.uk](http://www.sciencetransitshuttle.co.uk)

MRC Harwell Institute, Harwell Campus, OX11 0RD (A34, Milton Interchange)

Remember to register for the OCDEM Family  
Christmas Event by Friday 11<sup>th</sup> November



**OCDEM CHRISTMAS EVENT**  
**SATURDAY 10<sup>TH</sup> DECEMBER**

*The WIZARD of Oz*

**14:30 to 17:00**  
Mulled Wine, Mince Pies and Lot of Festive Cheer  
*Follow the Yellow Brick Road!*

Please let the OCDEM Oracle [ORACLE@OCDEM.OX.AC.UK](mailto:ORACLE@OCDEM.OX.AC.UK) know if you intend to come by Friday 11<sup>th</sup> November

## **OCDEM HEALTH CHAMPIONS!**

**Tai Chi** lessons will continue with Lee Jefferson (dates TBC) so watch out for posters with dates and venue!!! Please do come along and give it a try! Those who have done the sessions find that they are already finding them beneficial.



**May be coming to OCDEM soon!!!! Watch this space!!!**



## **BE THE MATCH! BONE MARROW REGISTRATION DRIVE FOR AN OXFORD COLLEAGUE 11TH NOVEMBER**

Dear colleagues,

Alastair, the 2-year-old son of Dr. Judy Kim, an employee of Oxford Uni (Dept. of Materials), is extremely poorly and requires a bone marrow transplant to save his life. They have searched all of the world's bone marrow registries and there are no matches for Ally.

A bone marrow registration drive for Oxford University employees/students will be held at the WTCHG, Seminar Room B on **Friday 11th November** from **11am-3pm**. Registration will take a few minutes of your time and consists of collection of some information (name, gender, height, weight, ethnicity, contact details), the signing of a consent form, followed by a cheek swab sample being taken (you will do this yourself). Maximum age of donors for DKMS is 55 years old; if you are already registered with DKMS/Anthony Nolan/other bone marrow registries, then you needn't re-register at this drive.

Please note that the Wellcome Trust have no affiliation to the family or DKMS, but they have kindly allowed me to use one of the Seminar Rooms for this purpose.

**All nationalities are invited to attend the registration, but it is likely that someone of Asian (particularly Korean) descent will be a match.**

More info at:

Website: [allysfight.com](http://allysfight.com)

FaceBook: [facebook.com/AllysFightUK](https://facebook.com/AllysFightUK)

Twitter/Instagram: @AllysFight

Hashtags: #AllysFight

DKMS.ORG.UK

Please contact me if you have any questions, or would like to help us on the day with registrations!

Many thanks in advance for your time,

Cathy

Dr. Cathy Oliveira  
Postdoctoral Research Scientist  
Chromatin & Genome Integrity Laboratory  
Wellcome Trust Centre for Human Genetics  
Roosevelt Drive  
Oxford  
OX3 7BN

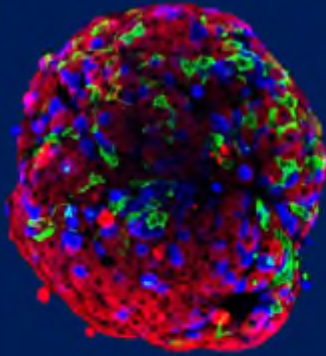
## **VICE CHANCELLOR'S QUESTION TIME**



You are warmly invited to the Vice-Chancellor's Question Time on Monday 21 November at 12.15pm. Join Professor Louise Richardson at the Saïd Business School to hear about some of the major issues facing the University and ask her about the issues that matter to you.

This is the first in this year's series of termly Q&A sessions, which are open to all members of University and College staff.

Further information and online registration is available at [www.ox.ac.uk/questiontime](http://www.ox.ac.uk/questiontime).



# Eyes on Diabetes: Research and Innovation

Friday 18 November, 2-6pm

Oxford Centre for Diabetes, Endocrinology &  
Metabolism (OCDEM),  
Churchill Hospital, Oxford, OX3 7LJ

To celebrate World Diabetes Day, we are opening  
our doors to the public!

Do you have questions about diabetes? Come meet the scientists,  
nurses and doctors working to improve the lives of people living  
with the condition.

**Throughout: Interactive stalls and lab  
tours**

Why do I or my family and friends have  
diabetes?

What's new in diabetes care in your community?

How far are we from finding a 'cure' for  
diabetes?

Is it all in your genes?

How can I get involved in research?

**4pm: Apples or Pears?**

Talk from Professor Fredrik Karpe about  
different types of fat and diabetes risk

For more information and a map, visit:  
<http://bit.ly/EyesOnDiabetes>



world diabetes day

**NHS**  
National Institute for  
Health Research



Oxford Centre for Diabetes,  
Endocrinology & Metabolism

Oxford Biomedical Research Centre

Radcliffe Department of Medicine